



Global Information Assurance Certification Paper

Copyright SANS Institute
Author Retains Full Rights

This paper is taken from the GIAC directory of certified professionals. Reposting is not permitted without express written permission.

Interested in learning more?

Check out the list of upcoming events offering
"Securing Windows and PowerShell Automation (Security 505)"
at <http://www.giac.org/registration/gcwn>

Registry Key Security
Practical Assignment for GIAC Monterey 2000
Windows Security
Submitted by: Daniel A Boss

© SANS Institute 2000 - 2002. Author retains full rights.

Table of Contents

Step 1:	Ensure remote access to the registry is restricted.....	Page 3
Step 2:	Security Configuration Manager (SCM).....	Page 4
Step 3:	Edit the configuration file.....	Page 5
Step 4:	Recommended edits.....	Page 7
Step 5:	Assigning the configuration to a database.....	Page 12
Step 6:	Performing the analysis.....	Page 14
Step 6a:	Performing the Analysis from the command line.....	Page 15
Step 7:	Configuring the system.....	Page 16
Step 7a:	Configuring the system using the command line.....	Page 17
Step 8:	Insure configurations remain constant.....	Page 17

© SANS Institute 2000 - 2002. Author retains full rights.

Windows system security and hardening best practices are based upon a layered approach consisting of operating system changes, file and directory permission modifications, registry key edits, auditing, physical security, and third party tools. An additional step to this layered approach to security is modification of the permissions on the systems registry.

Following normal best practices, verify all these procedures in a test environment prior to implementation on any production systems. Back-up all registry keys and update the ERD disk prior to starting these changes. Do not undertake this exercise unless you are comfortable working in REGEDT32, Microsoft Security Console and have a working knowledge of the registry.

Step 1: **Ensure remote access to the registry is restricted**

Although this is not a ‘permissions of the registry’ issue – it is too important as a ‘permissions to the registry’ issue to leave out or ignore.

- Δ Run *Regedt32*
- Δ Select *HKEY_LOCAL_MACHINE* in the local machine window
- Δ Drill down the *\System\CurrentControlSet\Control\SecurePipeServers* path
- Δ Create the *winreg* key if it is not present by,
- Δ Highlighting the *SecurePipeServers* key
- Δ Select **Add KEY** – from the **EDIT** menu
- Δ Enter “*winreg*” in the **Key Name:** field
- Δ Leave the **Class:** field blank
- Δ Click **OK** to close the **Add Key** window
- Δ Highlight the *winreg* key
- Δ Select **Add Value** – from the **Edit** menu
- Δ Enter “*RestrictGuestAccess*” for **Value Name:**
- Δ Select REG_DWORD from the **Data Type:** drop down list
- Δ Click **OK**
- Δ Enter “1” for the **Data:** value in the DWORD Editor
- Δ Click **OK**
- Δ Drill down the *\System\CurrentControlSet\Control\LSA* path
- Δ Highlight the *LSA* key
- Δ Select **Add Value** – from the **EDIT** menu
- Δ Enter “*RestrictAnonymous*” for Value Name
- Δ Select REG_DWORD from the **Data Type:** drop down list
- Δ Click **OK**
- Δ Enter “1” for the **Data:** value in the DWORD Editor
- Δ Click **OK**

Step 2: **Security Configuration Manager (SCM)**

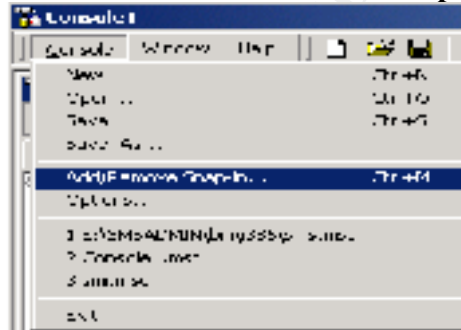
The SCM was included on the Windows NT Service Pack 4 CD-Rom or may be downloaded from Microsoft's FTP server at the following address:

<ftp://ftp.microsoft.com/bussys/winnt/winnt-public/tools/scm>.

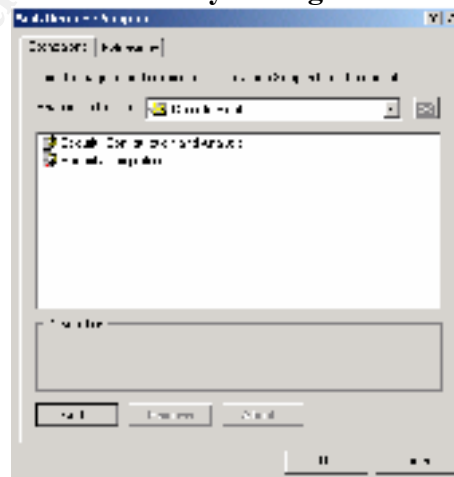
To install SCM – from a command prompt or from Windows NT Explorer – run the self-extracting file *scesp4i.exe*. To install both the GUI and command line tools, run *mssc.exe*. *Note – SCM is part of the Windows 2000 install. The command line tool allows for analysis of individual security areas as opposed to the entire configuration file. Additionally the results may be directed to a file for later review. Distributed system management tools may also use the command line tool to apply the configuration to remote or multiple systems.

To add SCM to the Microsoft Management Console (MMC) –

- Δ Run the MMC (*mmc.exe*)
- Δ From the **Console** menu choose **Add/Remove Snap-in**



- Δ Click **Add**
- Δ Select **Security Configuration Manager** (Windows 2000 users will add **Security Templates** and **Security Configuration and Analysis**)



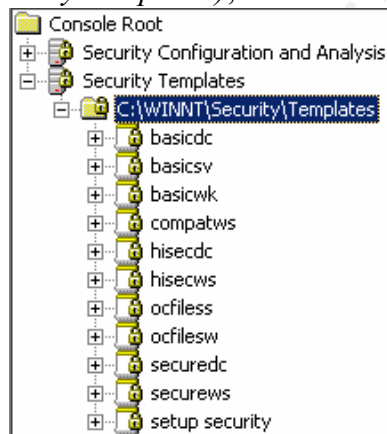
- Δ Click **OK**
- Δ Click **OK** again

Note * The SCM includes a set of pre-packaged configuration files. These files are located in *%SystemRoot%\Security\Templates*. These templates were designed for the three types of windows systems – workstation (wk), server (sv) and domain controller (dc), with three levels of available security – default (basic), compatible (comp) and secure (secur).

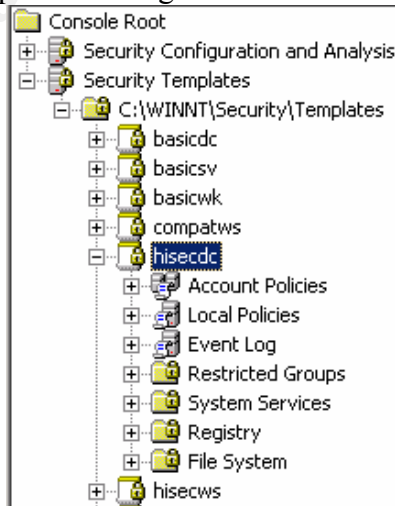
Step 3: **Edit the configuration file**

The security and settings of any of the templates may be modified. To modify a configuration file these steps should be taken.

- Δ Within the MMC – double click on the **Security Configuration Manager** (Windows 2000 – **Security Templates**) node in the left pane
- Δ Double click the **Configurations** node (not required in Windows 2000)
- Δ Double click on the default configuration file directory (*%SystemRoot%\Security\Templates*), the list of available files is revealed

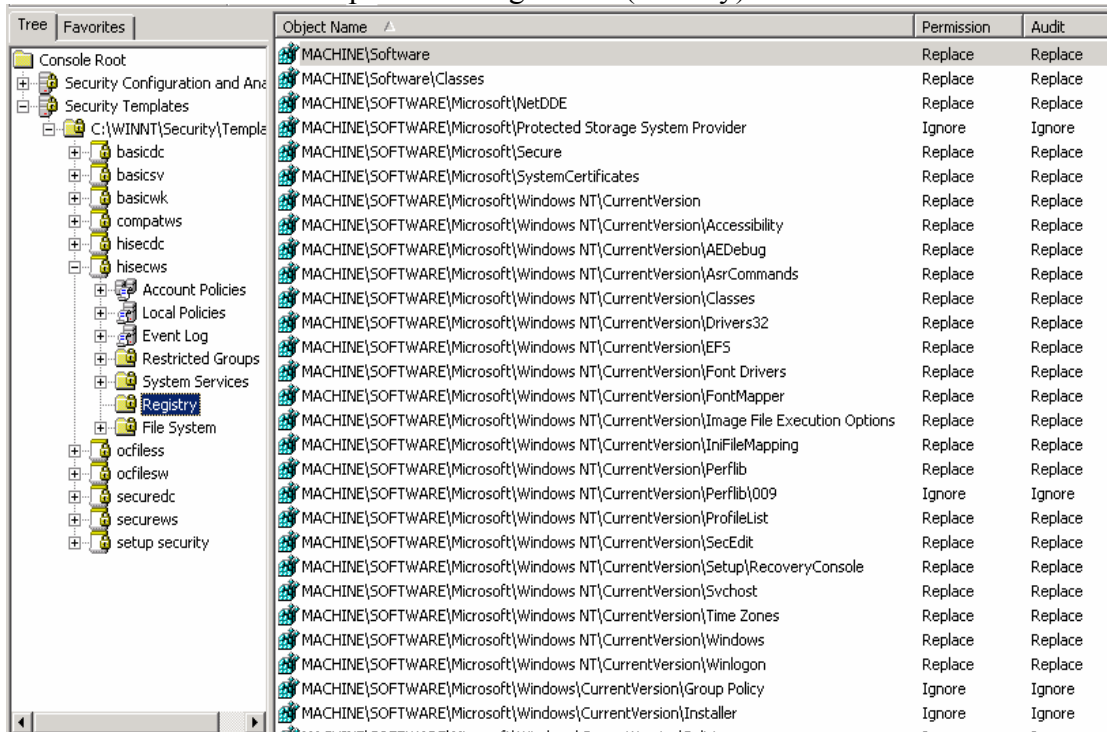


- Δ Double click on a specific configuration file



Registry Key Security

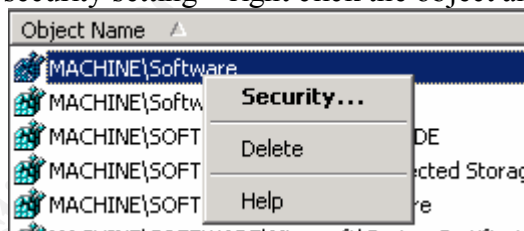
△ Double click on a specific configuration (security) area



Object Name	Permission	Audit
MACHINE\Software	Replace	Replace
MACHINE\Software\Classes	Replace	Replace
MACHINE\SOFTWARE\Microsoft\NetDDE	Replace	Replace
MACHINE\SOFTWARE\Microsoft\Protected Storage System Provider	Ignore	Ignore
MACHINE\SOFTWARE\Microsoft\Secure	Replace	Replace
MACHINE\SOFTWARE\Microsoft\SystemCertificates	Replace	Replace
MACHINE\SOFTWARE\Microsoft\Windows NT\CurrentVersion	Replace	Replace
MACHINE\SOFTWARE\Microsoft\Windows NT\CurrentVersion\Accessibility	Replace	Replace
MACHINE\SOFTWARE\Microsoft\Windows NT\CurrentVersion\AEDebug	Replace	Replace
MACHINE\SOFTWARE\Microsoft\Windows NT\CurrentVersion\AsrCommands	Replace	Replace
MACHINE\SOFTWARE\Microsoft\Windows NT\CurrentVersion\Classes	Replace	Replace
MACHINE\SOFTWARE\Microsoft\Windows NT\CurrentVersion\Drivers32	Replace	Replace
MACHINE\SOFTWARE\Microsoft\Windows NT\CurrentVersion\EF5	Replace	Replace
MACHINE\SOFTWARE\Microsoft\Windows NT\CurrentVersion\Font Drivers	Replace	Replace
MACHINE\SOFTWARE\Microsoft\Windows NT\CurrentVersion\FontMapper	Replace	Replace
MACHINE\SOFTWARE\Microsoft\Windows NT\CurrentVersion\Image File Execution Options	Replace	Replace
MACHINE\SOFTWARE\Microsoft\Windows NT\CurrentVersion\IniFileMapping	Replace	Replace
MACHINE\SOFTWARE\Microsoft\Windows NT\CurrentVersion\Perflib	Replace	Replace
MACHINE\SOFTWARE\Microsoft\Windows NT\CurrentVersion\Perflib\009	Ignore	Ignore
MACHINE\SOFTWARE\Microsoft\Windows NT\CurrentVersion\ProfileList	Replace	Replace
MACHINE\SOFTWARE\Microsoft\Windows NT\CurrentVersion\SecEdit	Replace	Replace
MACHINE\SOFTWARE\Microsoft\Windows NT\CurrentVersion\Setup\RecoveryConsole	Replace	Replace
MACHINE\SOFTWARE\Microsoft\Windows NT\CurrentVersion\Svchost	Replace	Replace
MACHINE\SOFTWARE\Microsoft\Windows NT\CurrentVersion\Time Zones	Replace	Replace
MACHINE\SOFTWARE\Microsoft\Windows NT\CurrentVersion\Windows	Replace	Replace
MACHINE\SOFTWARE\Microsoft\Windows NT\CurrentVersion\Winlogon	Replace	Replace
MACHINE\SOFTWARE\Microsoft\Windows\CurrentVersion\Group Policy	Ignore	Ignore
MACHINE\SOFTWARE\Microsoft\Windows\CurrentVersion\Installer	Ignore	Ignore

△ Double click on the specific security object in the right pane to modify

△ To modify the security setting – right click the object and choose **Security**



△ Customize all settings required by your environment

△ Delete all extra settings not required by your environment (this step will increase system performance in applying the setting – but not increase the security of the system)

△ Save the customized configuration file by right clicking on the file and choosing **Save As**

Step 4: Recommended edits

All registry keys not listed are expected to maintain the inherited permissions of their parent key. Keys with “Ignore” are excluded from SCM configuration and retain their original permissions.

HKEY_CLASSES_ROOT\

Key and subkeys	Administrators	Full Control
* Alias to HKLM\SOFTWARE\Classes	Creator/Owner	Full Control
Contains file associations and Common Object Model (COM) associations	System	Full Control
	Authenticated Users	Read, Write, Execute

HKEY_CLASSES_ROOT\help

Key	Administrators	Full Control
Contains help file associations	System	Full Control
	Authenticated Users	Read, Execute

HKEY_CLASSES_ROOT\helpfile

Key	Administrators	Full Control
Contains winhelp32 information	System	Full Control
	Authenticated Users	Read, Execute

HKEY_LOCAL_MACHINE\HARDWARE

Key	Administrators	Full Control
Contains data about the physical configuration of the machine	Creator/Owner	Full Control
	System	Full Control
	Authenticated Users	Read, Write, Execute, Delete

HKEY_LOCAL_MACHINE\SOFTWARE

Key	Administrators	Full Control
Contains data about the software installed of the machine	Creator/Owner	Full Control
	System	Full Control
	Authenticated Users	Read, Write, Execute, Delete

HKEY_LOCAL_MACHINE\SOFTWARE\Classes IGNORE

Key and subkeys Contains file associations and Common Object Model (COM) associations

HKEY_LOCAL_MACHINE\SOFTWARE\Microsoft\Cryptography

Key and subkeys	Administrators	Full Control
Contains management for CryptoAPI	System	Full Control
	Authenticated Users	Read, Execute

HKEY_LOCAL_MACHINE\SOFTWARE\Microsoft\NetDDE

Keys and subkeys	Administrators	Full Control
Contains settings for Network Dynamic Data Exchange, which is a protocol that allows Applications to exchange data	System	Full Control

Registry Key Security

HKEY_LOCAL_MACHINE\SOFTWARE\Microsoft\Ole

Key and subkeys	Administrators	Full Control
Contains configuration for Object Linking and Embedding (OLE)	System	Full Control
	Authenticated Users	Read, Execute

HKEY_LOCAL_MACHINE\SOFTWARE\Microsoft\OS/2 Subsystems for NT

Key and subkeys	Administrators	Full Control
Contains support for OS/2 standards	Creator/Owner	Full Control
* Best practice is for this key to be deleted	System	Full Control
	Authenticated Users	Read, Execute

HKEY_LOCAL_MACHINE\SOFTWARE\Microsoft\Protected Storage System Provider

Key and subkeys	IGNORE
Used to protect user data – Inaccessible	

HKEY_LOCAL_MACHINE\SOFTWARE\Microsoft\Rpc

Key and subkeys	Administrators	Full Control
Contains configuration for Remote Procedure Call (RPC)	System	Full Control
	Authenticated Users	Read, Execute

HKEY_LOCAL_MACHINE\SOFTWARE\Microsoft\Secure

Key and subkeys	Administrators	Full Control
Contains Microsoft application configuration data that should only be changed by an administrator	Creator/Owner	Full Control
	System	Full Control
	Authenticated Users	Read, Execute

HKEY_LOCAL_MACHINE\SOFTWARE\Microsoft\Windows

Key and subkeys	Administrators	Full Control
Contains the Win32 subsystem parameters	Creator/Owner	Full Control
	System	Full Control
	Authenticated Users	Read, Write, Execute

HKEY_LOCAL_MACHINE\SOFTWARE\Microsoft\Windows\CurrentVersion\Run

Key and subkeys	Administrators	Full Control
Contains names of executables to be run each time the system is started	System	Full Control
	Authenticated Users	Read, Execute

HKEY_LOCAL_MACHINE\SOFTWARE\Microsoft\Windows\CurrentVersion\RunOnce

Key and subkeys	Administrators	Full Control
Contains names of programs to be run the first time a user ever logs in	System	Full Control
	Authenticated Users	Read, Execute

HKEY_LOCAL_MACHINE\SOFTWARE\Microsoft\Windows\CurrentVersion\RunOnceEx

Key and subkeys	Administrators	Full Control
Contains setup information for system components and Internet Explorer	System	Full Control
	Authenticated Users	Read, Execute

Registry Key Security

HKEY_LOCAL_MACHINE\SOFTWARE\Microsoft\Windows\CurrentVersion\Shell Extensions

Key and subkeys	Administrators	Full Control
Contains all shell extension settings to extend the Windows NT interface	Creator/Owner	Full Control
	System	Full Control
	Authenticated Users	Read, Execute

HKEY_LOCAL_MACHINE\SOFTWARE\Microsoft\Windows\CurrentVersion\Uninstall

Key and subkeys	Administrators	Full Control
Contains uninstall strings for all applications that can be removed by Add/Remove Programs	Creator/Owner	Full Control
	System	Full Control
	Authenticated Users	Read, Execute

HKEY_LOCAL_MACHINE\SOFTWARE\Microsoft\Windows NT

Key and subkeys	Administrators	Full Control
Contains parameters used by the Windows NT operating system	Creator/Owner	Full Control
	System	Full Control
	Authenticated Users	Read, Execute

HKEY_LOCAL_MACHINE\SOFTWARE\Microsoft\Windows NT\CurrentVersion\AEDebug

Key and subkeys	Administrators	Full Control
Contains settings for Dr. Watson or other application debuggers	System	Full Control
	Authenticated Users	Read, Execute

HKEY_LOCAL_MACHINE\SOFTWARE\Microsoft\Windows NT\CurrentVersion\Compaibility

Key and subkeys	Administrators	Full Control
Contains data for legacy applications not completely compatible with Windows NT	Creator/Owner	Full Control
	System	Full Control
	Authenticated Users	Read, Write, Execute

HKEY_LOCAL_MACHINE\SOFTWARE\Microsoft\Windows NT\CurrentVersion\Font Drivers

Key and subkeys	Administrators	Full Control
Contains drivers to display fonts	System	Full Control
	Authenticated Users	Read, Execute

HKEY_LOCAL_MACHINE\SOFTWARE\Microsoft\Windows NT\CurrentVersion\Font Mapper

Key and subkeys	Administrators	Full Control
Contains settings for mappings of unavailable fonts to existing fonts	System	Full Control
	Authenticated Users	Read, Execute

HKEY_LOCAL_MACHINE\SOFTWARE\Microsoft\Windows NT\CurrentVersion\Image File Execution Options

Key and subkeys	Administrators	Full Control
Contains parameters for viewing images	System	Full Control
	Authenticated Users	Read, Execute

Registry Key Security

HKEY_LOCAL_MACHINE\SOFTWARE\Microsoft\Windows NT\CurrentVersion\IniFileMappings

Key and subkeys	Administrators	Full Control
Contains mappings for 16-bit Windows application initialization files	System	Full Control
	Authenticated Users	Read, Execute

HKEY_LOCAL_MACHINE\SOFTWARE\Microsoft\Windows NT\CurrentVersion\Perflib

Key and subkeys	Administrators	Full Control
Contains parameters for the performance library which collects data for performance monitor	System	Full Control
	Authenticated Users	Read, Execute

HKEY_LOCAL_MACHINE\SOFTWARE\Microsoft\Windows NT\CurrentVersion\Perflib\009

Key and subkeys	IGNORE
Contains performance names and descriptions	

HKEY_LOCAL_MACHINE\SOFTWARE\Microsoft\Windows NT\CurrentVersion\Time Zones

Key and subkeys	Administrators	Full Control
Contains time zone settings	System	Full Control
	Authenticated Users	Read, Execute

HKEY_LOCAL_MACHINE\SOFTWARE\Microsoft\Windows NT\CurrentVersion\Winlogon

Key and subkeys	Administrators	Full Control
Contains logon sequence controls	System	Full Control
	Authenticated Users	Read, Execute

HKEY_LOCAL_MACHINE\SOFTWARE\Program Groups

Key and subkeys	Administrators	Full Control
Contains information about former program groups	Creator/Owner	Full Control
if a pre-NT 4.0 operating system has been converted	System	Full Control
	Authenticated Users	Read, Execute

HKEY_LOCAL_MACHINE\SOFTWARE\Secure

Key and subkeys	Administrators	Full Control
Contains application configuration data that should only be changed by an administrator	Creator/Owner	Full Control
	System	Full Control
	Authenticated Users	Read, Execute

HKEY_LOCAL_MACHINE\SOFTWARE\Windows 3.1 Migration Status

Key and subkeys	Administrators	Full Control
Contains data if the system has been upgraded from Windows 3.1 to Windows NT	Creator/Owner	Full Control
	System	Full Control
	Authenticated Users	Read, Execute

Registry Key Security

HKEY_LOCAL_MACHINE\SYSTEM\CurrentControlSet\Control\SecurePipeServers\winreg

Key and subkeys	Administrators	Full Control
	System	Full Control

The security permissions assigned to this key define which users have remote access to the registry. Default Windows NT Workstation installation does not define this key and does not restrict remote access to the registry. Windows NT Server permits only administrators' remote access to most of the registry. It is highly recommended that only administrators have remote access to the registry.

HKEY_LOCAL_MACHINE\SYSTEM\CurrentControlSet\Services\LanmanServer\Shares

Key and subkeys	Administrators	Full Control
Contains settings for the local system shares	Creator/Owner	Full Control
	System	Full Control
	Authenticated Users	Read, Execute

HKEY_LOCAL_MACHINE\SYSTEM\CurrentControlSet\Services\Schedule

Key and subkeys	Administrators	Full Control
Contains settings for the scheduler service	Creator/Owner	Full Control
	System	Full Control
	Authenticated Users	Read, Execute

HKEY_LOCAL_MACHINE\SYSTEM\CurrentControlSet\Services\UPS

Key and subkeys	Administrators	Full Control
Contains information on the Uninterruptible Power Supply if installed	Creator/Owner	Full Control
	System	Full Control
	Authenticated Users	Read, Execute

HKEY_USERS\DEFAULT

Key and subkeys	Administrators	Full Control
Profile that is used while the Windows NT CTL-ALT-DEL Logon Message is displayed	System	Full Control
	Authenticated Users	Read, Execute

HKEY_USERS\DEFAULT\Software\Microsoft\NetDDE

Key and subkeys	Administrators	Full Control
Settings for Network Dynamic Data Exchange, which is a protocol that allows applications to exchange data	System	Full Control

HKEY_USERS\DEFAULT\Software\Microsoft\Protected Storage Systems Provider

Key and subkeys	IGNORE
Used to protect user data—inaccessible	

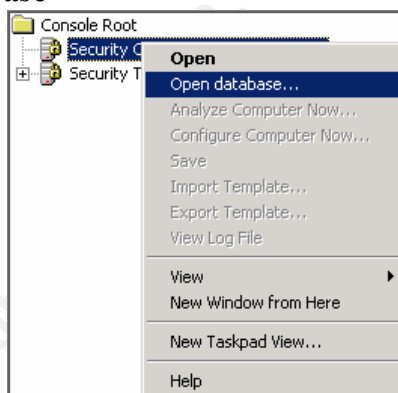
HKEY_USERS\DEFAULT\Software\Microsoft\Windows\CurrentVersion\Policies

Key and subkeys	Administrators	Full Control
Used to manage Recreational Software Advisory Council (RASC) ratings	Creator/Owner	Full Control
	System	Full Control
	Authenticated Users	Read, Execute

Step 5: Assigning the configuration to a database

After completing the creation of your “.inf” file, you can analysis and configure the system. The creation of the “.inf” file can be done from any Windows NT or Windows 2000 system, and applied to other systems as needed. The security analysis and configuration may be performed from the GUI or from a command line. The command line allows you to create a batch file and perform these actions on multiple systems or at a predetermined interval using the scheduler service or a third-party tool. *Always remember to completely test the configuration file prior to applying it to a production box as a loss in performance and/or functionality may result.

- Δ The SCM uses a database to store configurations for both the analysis and application of the configuration. A best practice is to create a new database for each analysis and configuration. Import operations can append to or overwrite the database information. Appending is the default setting, but may cause confusion and/or unwanted combining of configurations. Check the “Overwrite existing configuration in database” to avoid this problem.
- Δ To open an existing or new database in the SCM GUI. Right click on the **Database** node
- Δ Select **Open Database**



- Δ Enter the name of the database you wish to create – or the name of an existing database.
- Δ Click **Open**
- Δ If a new database name was entered the system will automatically prompt you to enter the configuration file to import.
- Δ If you use an existing database – right click on the **Database** node – choose **Import Configuration**

- Click **Open**.

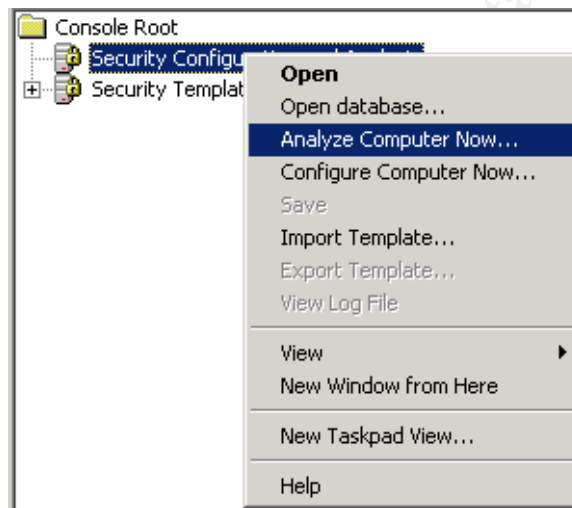


- Click **Open**.

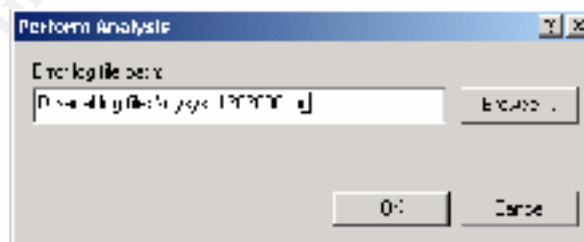
Step 6: Performing the analysis

The analysis is actually run against the database, which is using the configuration file(s) “.inf” that have been imported. The current system settings are compared to the configuration settings in the configuration files and the results are stored back into the database. Both the current settings and the configuration settings are then displayed side by side and additional modifications to the configuration setting may be made and saved back to the “.inf” file.

- Δ From the SCM in MMC right click on the **Database** node
- Δ Select **Analyze System Now**



- Δ Enter an error log file path into the **Perform Analysis** dialog box. The log information is appended to the specified log file. You must specify a new file name if you want a new or separate log to be created.



- Δ Click **OK**
- Δ Examine and modify the settings as needed.

Step 6a: **Performing the Analysis from the command line**

To perform these same actions from the command line, use the following syntax. This syntax may be used in a batch file.

```
Secedit /analyze [/cfg filename] [/db filename] [/log logpath] /verbose [/quiet]  
[/overwrite] [>> results_file]
```

/cfg --- Path to the .inf file that will be appended to the database prior to the analysis

/db --- Path the database that SCE will perform the analysis against. If this variable is not set than the last database used in analysis or configuration is used. The system default database is %systemroot%\security\database\secdit.sdb.

/log --- Path to the log file for the process. If this file is not specified, the progress information will be output to the console.

/verbose --- Specify detailed progress information.

/quiet --- Suppress screen and log output.

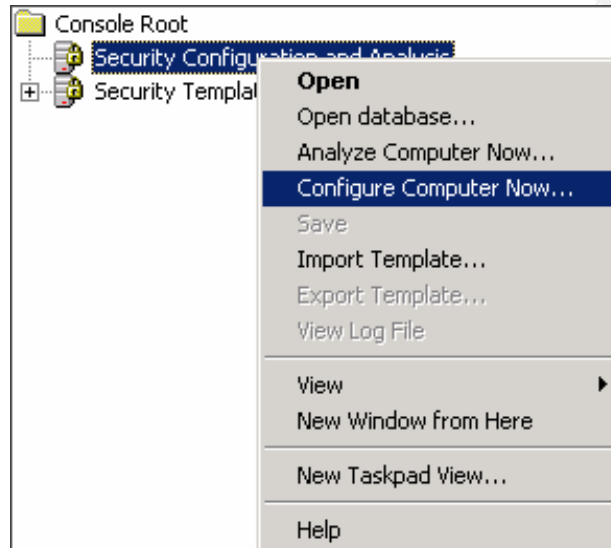
/overwrite --- This will overwrite the named database with the configuration file information. This is a recommended switch to avoid unwanted combinations of configurations.

>> results_file --- This is the name and path of the file you wish to contain the results of the analysis. This file allows you to analysis at any time and review the results later.

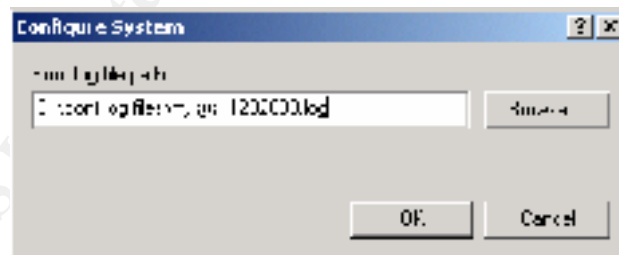
Step 7: **Configuring the system**

Some errors may result during the configuration if specific registry keys do not exist on the system, but are included in the .inf file. This is a normal condition due to the generic nature of the .inf files that were included in the SCM, and should cause no alarm.

- Δ From the SCM GUI – right click on the **Database** node
- Δ Select **Configure Now**



- Δ Enter the error log file path into the **Configure System** dialog box



- Δ Click **OK**
- Δ Reboot the system.

Step 7a: **Configuring the system using the command line**

To configure a system from the command line – use the following syntax

```
Secedit /configure [/cfg filename] [/db filename] [/log logpath] /verbose [/quiet]  
[/overwrite] [areas Areas]
```

/cfg --- Path to the .inf file that will be appended to the database prior to the analysis

/db --- Path the database that SCE will perform the analysis against. If this variable is not set then the last database used in analysis or configuration is used. The system default database is %systemroot%\security\database\secdit.sdb.

/log --- Path to the log file for the process. If this file is not specified, the progress information will be output to the console.

/verbose --- Specify detailed progress information.

/quiet --- Suppress screen and log output.

/overwrite --- This will overwrite the named database with the configuration file information. This is a recommended switch to avoid unwanted combinations of configurations.

/areas --- This will apply specific areas of the .inf file – for registry permissions use “**REGKEYS**” – if this switch is not used then all areas of the .inf will be applied.

Step 8: **Insure configurations remain constant**

Once all settings have been made and applied – each system should be checked periodically to ensure the current system configuration has not changed. This can be scripted thru batch file analysis and reviewed either manually or thru automated means. This provides an additional means to monitor for intrusions based on both the analysis of the security configuration and by use of auditing.

References:

Guide to Securing Microsoft Windows NT Networks

National Security Agency : Report number C4-008R-99

Guide to Windows NT Security

Charles B Rutstein – McGraw Hill – ISBN 0-07-057833-8

Windows NT Security Handbook

Tom Sheldon – Osborne McGraw Hill – ISBN 0-07-882240-8

Windows 2000 Security

Roberta Bragg – New Riders – ISBN 0-7357-0991-2

Microsoft Windows 2000 Server Administrator's Companion

Russel Crawford – Microsoft press – ISBN 1-57231-891-8

Windows NT System Administration

Aleen Frisch – O'Reilly – ISBN 1-56592-274-3

Microsoft TechNet

Multiple months and Knowledge Base articles

Securing Windows NT Step-by-Step

Jennifer Kolde, Jason Fossen – SANS Institute 2000

Other GIAC Research papers to help shed light on this same topic or tools:

Securing Windows NT

Andrew Kjell Nielsen

IT Services security plan –

GIAC NT

Don Michelli

Securing Microsoft IIS 5 using Windows 2000 Internet Server Security Configuration Tool

George M. Garner Jr.

Limiting Anonymous Logon/Network Access to Named Pipes and Shares

John W. Albright